



The Bridge to the Future

At St. Mary's, we create a foundation of spiritual strength on which each student can excel at learning, in an environment that cultivates emotional and physical well being.

Yet, tuition and fees at St. Mary's only account for approximately 90% of the income needed to sustain our Schools.

Traditionally, the way that most private schools like ours would address growing financial demands would be to increase tuition or eliminate programs.

At St. Mary's we strive to keep tuition affordable, and continue to fund the vital programs that

contribute to the excellence of St. Mary's in other ways.

The Fleur-de-Lis Fund, our annual giving program, was launched to bridge the 10% gap between our income and costs. This collective ongoing fundraising effort, which involves the entire St. Mary's community, enables us to sustain and advance our mission





to provide the highest-quality academic and spiritual education.

This essential support from alumni, parents, grandparents, parishioners and the greater community of friends benefits students through:

- Lower overall tuition costs;
- Scholarship programs;
- Quality faculty; and
- Academic enhancements.

In short, the Fleur-de-Lis Fund provides the resources needed to fund these crucial programs while keeping a St. Mary's education within financial reach for our families.



“It was a connection with individual teachers at St. Mary’s Schools that laid the academic foundation for my success in college, graduate school and my achievement of earning a PhD. As Assistant Principal for Academics at the High School, my single greatest satisfaction lies in knowing that teachers continue to make a difference in the lives of the young people at St. Mary’s.”

Chris Morgan ‘82
Parent, Alumnus and Assistant Principal





.....
“The first time I went to Mass at St. Mary’s many years ago, I knew that if I ever left Puerto Rico this is where I wanted my family to be. The traditions and spiritual life together with good academics was going to keep our children on the right path through life. It became our home away from home.”

Chrissy Fuentes
Parent



.....
“St. Mary’s athletic teams have enjoyed tremendous success on the playing fields, but the programs’ ultimate strengths go well beyond wins and losses. Playing sports for the Saints allows the student-athletes to build relationships and learn lessons that will last a lifetime.”

Mark Murphy ‘90
Alumnus





Gifts to the Fleur-de-Lis Fund Provide:

- Revenue to bridge the gap between tuition and actual annual student costs
- Support for spiritual and service programs such as the campus ministry, retreats, St. Mary's OutReach Experience and Saints in Action
- Professional development for faculty and administrative staff
- Maintaining a safe and secure environment for your children
- State-of-the-art classroom technology
- Tuition assistance and scholarships
- Athletic program support

.....

"It is my pleasure, as the Assistant Principal, to have the opportunity to give back and instill in our children the values, morals and academic excellence that were provided to me as a St. Mary's student. I feel blessed to entrust the education of my own children in the hands of our dedicated and loving faculty who strive to foster a love of God and develop lifelong learners."

Rebecca McNealey '90
Alumna, Parent and Assistant Principal

.....

Ways to Give

There are several different methods of making a contribution to St. Mary's Schools. Each method provides you, with attractive tax benefits and is suited to varying financial situations. A description of each of these methods follows. If you would like more information, have questions or need assistance in making your gift, please don't hesitate to contact the St. Mary's Office of Advancement at **410-268-3467** or email: **fleurfundinfo@stmarysannapolis.org**.

Gifts of Cash

The easiest and most direct way to support St. Mary's Schools is to make your gift by check or credit card.

You can send your donation by mail or make it online at: www.mystmarys.org/donations.

Pledges

Making scheduled payments over several months enables many individuals to increase the amount of their support to St. Mary's Schools during the course of the year. You can set up a donation schedule with the St. Mary's Office of Advancement.

Gifts of Stock

It is almost always more tax-wise to contribute stock rather than cash because a gift of appreciated stock normally offers a two-fold tax saving. You not only receive a charitable gift tax reduction for the fair market value of the security, but also avoid the capital gains tax on the appreciation. The transfer can be initiated by your broker and accomplished through an electronic transfer.

Matching Gifts

Your gift can be doubled or tripled if you or your spouse's employer matches charitable donations. Please contact your human resources department to ask whether yours is a participating matching gifts company. If so, simply request a matching gift form, complete and forward it to the Advancement Office.



Giving Clubs

No gift to the Fleur-de-Lis Fund is too small or too large and all gifts are tax-deductible. Those donating to the Fleur-de-Lis Fund will be recognized in the St. Mary's Parish and School Annual Report as follows:

Fleur-de-Lis Club	\$25,000+
Charles Carroll Club	\$10,000-\$24,999
Redemptorist Club	\$5,000-\$9,999
School Sisters of Notre Dame Club	\$2,500-\$4,999
Theresian Club	\$1,000-\$2,499
Blue & White Club	\$500-\$999
Saints Club	\$100-\$499



FLEUR-DE-LIS FUND

Supporting Programs that Build the Mind, Body & Spirit

St. Mary's Office of Advancement
113 Duke of Gloucester St., Annapolis, MD 21401
Phone: 410-268-3467 • Fax: 410-263-4553
fleurfundinfo@stmarysannapolis.org



Frequently asked questions about the Fleur-de-Lis Fund:

What is the Fleur-de-Lis Fund?

The Fleur-de-Lis Fund is simply a new name for the Annual Fund, which supports vital programs that build the mind, body and spirit of every St. Mary's student. In recognition of this, we felt it fitting to rename this annual initiative in honor of the Fleur-de-Lis, a symbol of the Holy Trinity.

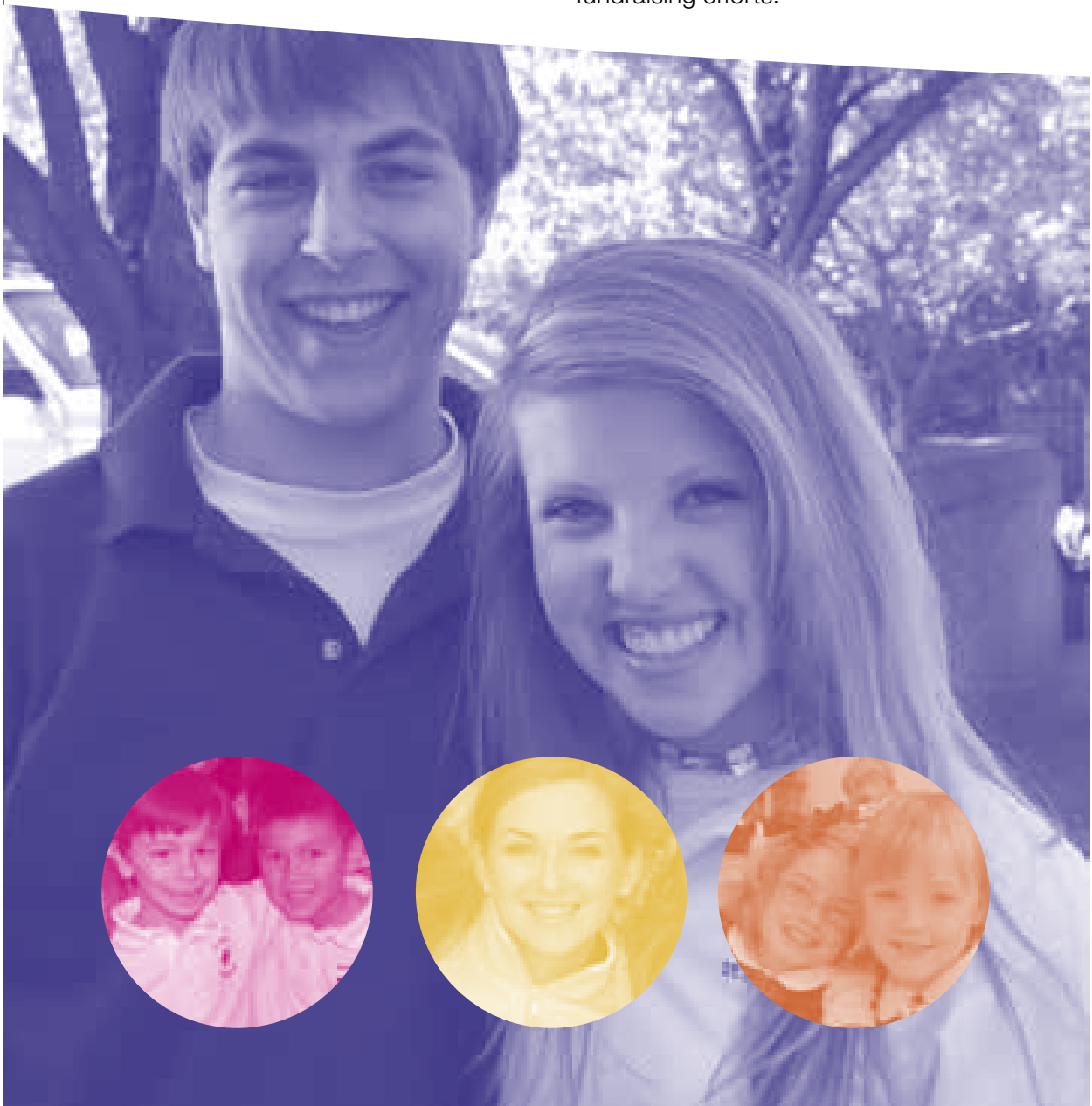
Why do we need the Fleur-de-Lis Fund?

At present, tuition accounts for only 90% of the income needed to sustain our school. Traditionally, any growth on the expense side—academic

programs, quality faculty—has been funded through an increase in tuition. At St. Mary's we strive to keep tuition affordable and therefore we need to continue to fund the vital programs that contribute to the excellence of St. Mary's Schools in other ways.

Why not just raise the tuition?

In keeping with our commitment to make Catholic education more affordable, St. Mary's charges a tuition less than the true educational cost per student. This results in a deficit which must be made up through gifts to the Fleur-de-Lis Fund and other school fundraising efforts.



If tuition was raised to the actual cost, it would place too large of a burden on parents, and would make it impossible for many children to have the opportunity to receive a Catholic education. Another reason for not raising tuition to actual cost is that there would be no benefit to parents at income tax time—in most cases a gift to St. Mary's through the Fleur-de-Lis Fund is tax deductible!

Is the concept of annual giving unique to St. Mary's?

No. Most Catholic schools are committed to keeping tuition costs within the reach of all families. So we rely upon the generosity of our constituents to provide the resources needed to enhance our students' educational experiences.

How is the Fleur-de-Lis Fund different from the capital campaign or our weekly offertory?

The Fleur-de-Lis Fund provides crucial support for our school's year-to-year operating budget while the capital campaign raises funds for one time capital projects such as the improvements to Marian Hall, the new entrance and parking lot at St. John Neumann and the new St. Mary's field. Our weekly offertory gifts support the work of our parish including the more than 70 ministries that serve our community.



Can I designate where my contribution goes?

Yes, you can direct your gift in support of a program that is particularly meaningful to you. If you are interested in a directed gift, please contact the Advancement Office and we will discuss the opportunities and options with you.

When should I give and how often?

We rely on your support each and every year. The Fleur-de-Lis Fund coincides with the School's fiscal year, which is July 1-June 30. Your gift can be made anytime throughout the year by mail, phone, or online. And, no gift is too large or too small. Recent gifts ranged from \$25 to more than \$50,000. Our goal is 100% participation!

How do I get more information on the Fleur-de-Lis Fund?

Contact the St. Mary's Office of Advancement either by phone, fax, mail or email if you have any questions or would like to discuss your giving options.

St. Mary's Office of Advancement

113 Duke of Gloucester St.

Annapolis, Maryland 21401

Phone: 410-268-3467

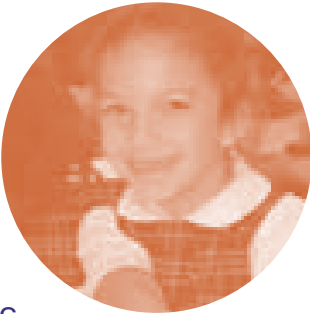
Fax: 410-263-4553

fleurfundinfo@stmarysannapolis.org





“I participated in all of the drama productions as a St. Mary’s student and now serve as the High School’s Theater Director. As a student, theater was a place where everyone was welcomed... and encouraged. And it remains that way today. Our philosophy at St. Mary’s is to foster the artistic talents of everyone—whether it’s through singing, dancing, acting or the visual arts. The collaborative nature of theater allows for these disciplines to work hand-in-hand so that students learn to entertain, reflect and most importantly, give back.”



Kathleen Ruttum '81
Parent, Alumna & Staff





FLEUR•DE•LIS FUND

Supporting Programs that Build the Mind, Body & Spirit